

WORLDS OTHERWISE HIDDEN

Nevin Aladağ
Kimsooja
Nari Ward

May 17–September 2, 2018 | Charlotte Crosby Kemper Gallery | Kemper Museum of Contemporary Art

Exhibition Checklist

Works on view: 13

Nari Ward

Jamaican-American, born 1963



***Ground (In Progress)*, 2015**

copper, brick, darkening patina, each 2½ x 48 x 48; 2½ x 144 x 144 inches overall
Collection of Jorge Jelacic

Courtesy the artist, Lehmann Maupin, New York and Hong Kong.



***Mango Tourist*, 2011**

foam, battery canisters, Sprague Electric Company resistors and capacitors
mango pits, 3 figures, each approximately 120 inches in height

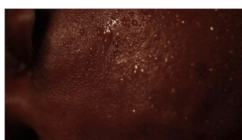
In collaboration with MASS MoCa, North Adams, Massachusetts
Courtesy of Lehman Maupin, New York and Hong Kong.



***Jaunt*, 2011**

single-channel video, color, sound, 7 minute, 51 seconds

In collaboration with MASS MoCa, North Adams, Massachusetts
Courtesy of Lehman Maupin, New York and Hong Kong.



***Sweater*, 2011**

single-channel video, color, sound, 4 minutes, 56 seconds

In collaboration with MASS MoCa, North Adams, Massachusetts
Courtesy of Lehman Maupin, New York and Hong Kong.



***We the People*, 2011**

shoelaces, 96 x 324 inches

In collaboration with The Fabric Workshop and Museum, Philadelphia
Speed Art Museum, Gift of the Speed Contemporary, 2016.1

Courtesy the artist, Lehmann Maupin, New York and Hong Kong.



***Breathing Panel: Oriented Right*, 2015**

oak wood, copper sheet, copper nails, darkening patina, 96 x 120 x 1¼ inches
Collection of Allison and Larry Berg, Los Angeles

Courtesy the artist, Lehmann Maupin, New York and Hong Kong.

WORLDS OTHERWISE HIDDEN

Nevin Aladağ
Kimsooja
Nari Ward

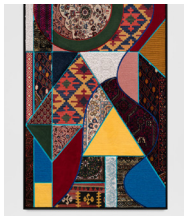
May 17–September 2, 2018 | Charlotte Crosby Kemper Gallery | Kemper Museum of Contemporary Art

Exhibition Checklist

Works on view: 13

Nevin Aladağ

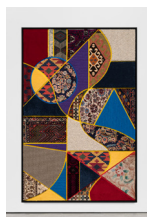
German, born Turkey, 1972



Social Fabric, turquoise blue red, 2017

carpet pieces on wood, 67¾ x 44 x 2 inches

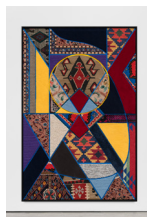
The Ekard Collection, Courtesy of the artist and WENTRUP, Berlin,
© Nevin Aladağ, courtesy WENTRUP, Berlin. Photo: Trevor Good.



Social Fabric, yellow blue red, 2017

carpet pieces on wood, 67¾ x 44 x 2 inches

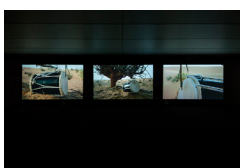
The Ekard Collection, Courtesy of the artist and WENTRUP, Berlin,
© Nevin Aladağ, courtesy WENTRUP, Berlin. Photo: Trevor Good.



Social Fabric, blue petrol yellow, 2017

carpet pieces on wood, 67¾ x 44 x 2 inches

Private Collection, California, Courtesy of the artist and WENTRUP, Berlin
© Nevin Aladağ, courtesy WENTRUP, Berlin. Photo: Trevor Good.



Session, 2013

HD 3-channel video w/sound, 6 min. loop

Courtesy of the artist and WENTRUP, Berlin

© Nevin Aladağ, courtesy WENTRUP, Berlin. Photo: Trevor Good.



Makramé, 2011

wire cable, 51¼ x 27½ inches

Courtesy of the artist and WENTRUP, Berlin

© Nevin Aladağ, courtesy WENTRUP, Berlin. Photo: Trevor Good.



Makramé, 2014

wire cable, 72¾ x 39½ inches

Courtesy of the artist and WENTRUP, Berlin

© Nevin Aladağ, courtesy WENTRUP, Berlin. Photo: Trevor Good.

WORLDS OTHERWISE HIDDEN

Nevin Aladağ
Kimsooja
Nari Ward

May 17–September 2, 2018 | Charlotte Crosby Kemper Gallery | Kemper Museum of Contemporary Art

Exhibition Checklist

Works on view: 13

Kimsooja

Korean, born 1957



To Breathe - Zone of Nowhere, 2017
fabric flags, 16 flags, 60 x 96 inches each
Courtesy of the artist
© Kimsooja